



HEALTH AND MEDICAL SCIENCES TRENDS



VIRGINIA DEPARTMENT OF EDUCATION

SESSION INFORMATION

- **Please put all questions in the Q&A**
- **Use “speaker view” for the best experience**
- **Mute your microphone during the session presentation**
- **All sessions are being recorded**
- **Complete the survey at the end of the session for PD points – please do not leave the Zoom**

CRYSTAL STOKES

**HEALTH AND MEDICAL SCIENCES
AND RELATED CLUSTERS SPECIALIST**



WILLIAM A. HAZEL JR., M.D.

**SENIOR DEPUTY EXECUTIVE DIRECTOR,
CLAUDE MOORE FOUNDATION**

Department of Education

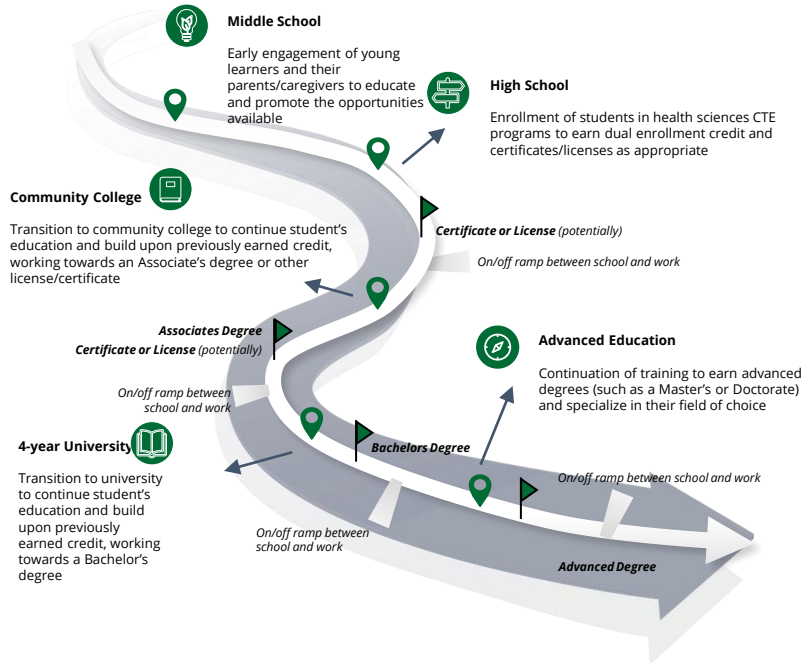
Health and Medical Sciences Trends

June 28, 2023



The Claude Moore Charitable Foundation

Recognized for developing programs and partnerships, the Foundation aims to increase academic competence and encourage leadership abilities to increase opportunity for all Virginians.



In early 2020, the Foundation committed to develop a model **to expand the Claude Moore Scholars Program in a scalable, sustainable way.**

The **health sciences workforce highway enables continuous learning**, beginning with early engagement in middle school and continuing throughout with professional education.

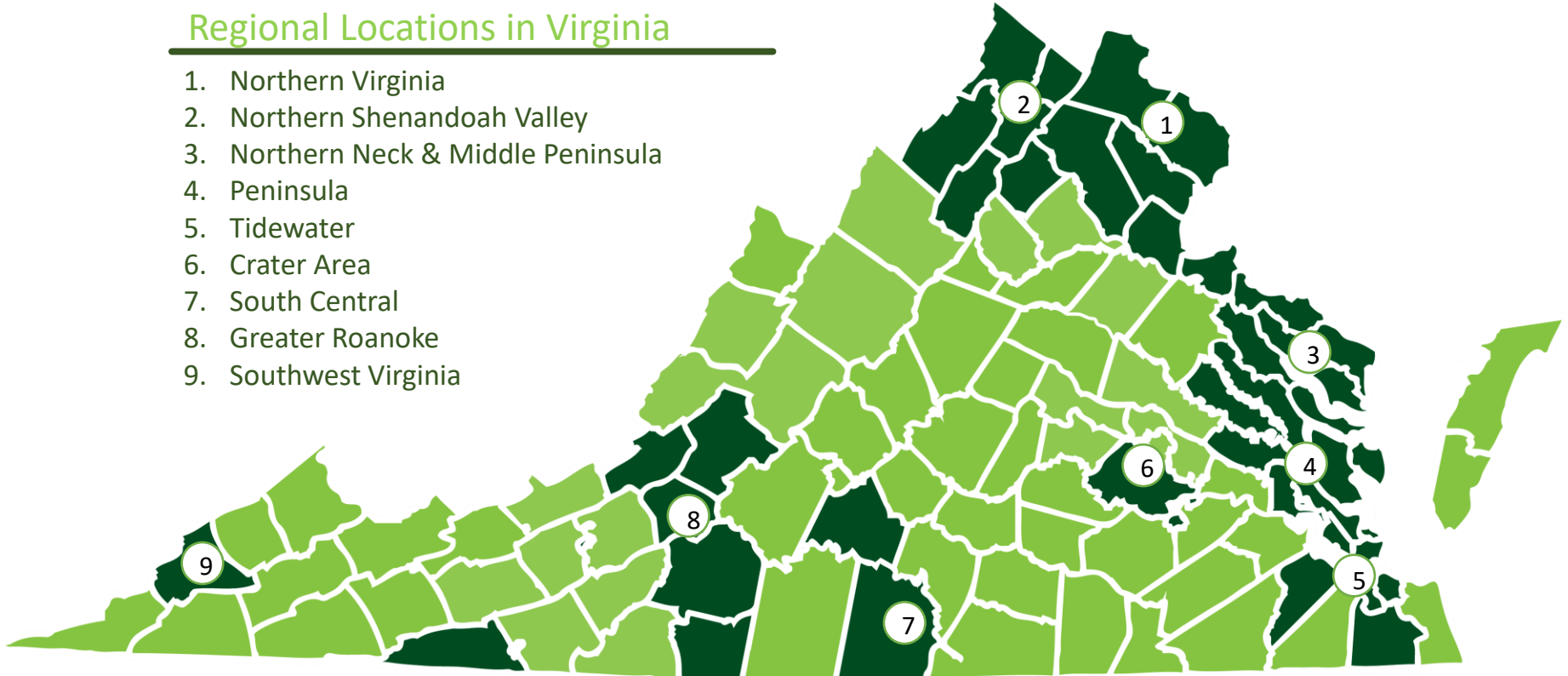
Destination:

- "Your community"
- Improved quality of life
- Stronger economy
- Better health
- Meaningful careers

Claude Moore Scholar Statewide Expansion

Regional Locations in Virginia

1. Northern Virginia
2. Northern Shenandoah Valley
3. Northern Neck & Middle Peninsula
4. Peninsula
5. Tidewater
6. Crater Area
7. South Central
8. Greater Roanoke
9. Southwest Virginia





Claude Moore SCHOLARS

A HEALTHCARE EDUCATION PROGRAM

Update for 2023-2024

- There are 18 Claude Moore Scholars programs situated across the Commonwealth of Virginia for the 2023-2024 school year.
- Five(5) are led by community college sites, four (4) are led by healthcare employers, and nine (9) are led by public school systems.
- 7,324 students participated in the Claude Moore Scholars program across the Commonwealth in the 2022-2023 school year.

Health Science Programs Supported by CM Scholars, SY 2022-2023

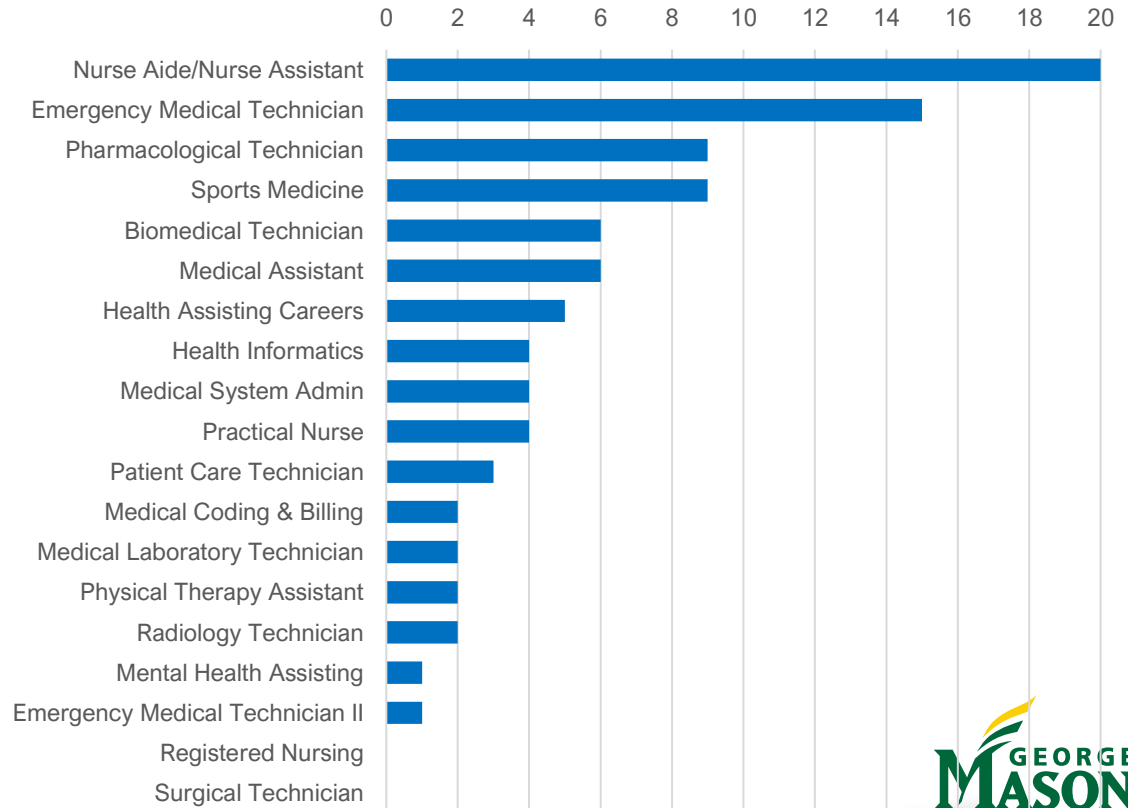
A total of **6,484** students enrolled in **30** health science programs & exploratory courses

2,997 enrollments in occupational training programs

3,463 enrollments in introductory/exploratory courses

Count of Health Science Programs Associated with CM Scholars

Evaluated via the 2022 - 2023 Fall Enrollment Reports



CM Scholars Enrollment by Program, SY 2017 - 2022

Program	2017	2018	2019	2020	2021	2022*
Biomedical Technician	0	0	0	0	48	190
Emergency Medical Technician	93	84	123	25	94	230
Health Assisting Careers	0	0	0	38	137	157
Health Informatics	153	190	132	34	24	24
Medical Assistant	15	21	38	10	27	388
Medical Coding & Billing	0	0	0	0	3	36
Medical Laboratory Technician	200	187	205	48	63	77
Medical System Admin	0	0	0	0	14	47
Mental Health Assisting	0	0	0	18	38	17
Nurse Aide/Nurse Assistant	297	333	375	343	739	596
Patient Care Technician	24	42	61	10	3	30
Pharmacological Technician	216	212	232	277	78	417
Physical Therapy Assistant	0	0	0	0	6	122
Practical Nurse	0	0	10	0	37	99
Radiology Technician	123	130	131	28	57	50
Registered Nursing	0	0	0	0	17	NR
Sports Medicine	0	0	0	0	59	532
Surgical Technician	20	11	19	0	10	NR
Totals	1,141	1,120	1,326	831	1,454	3,012

*Represents fall enrollment for school year 2022-2023

NR = Not reported



BRPHSC Website:

www.virginiahealthcareers.org



Blue Ridge Partnership
for Health Science Careers

Health
Careers

Education
Partners

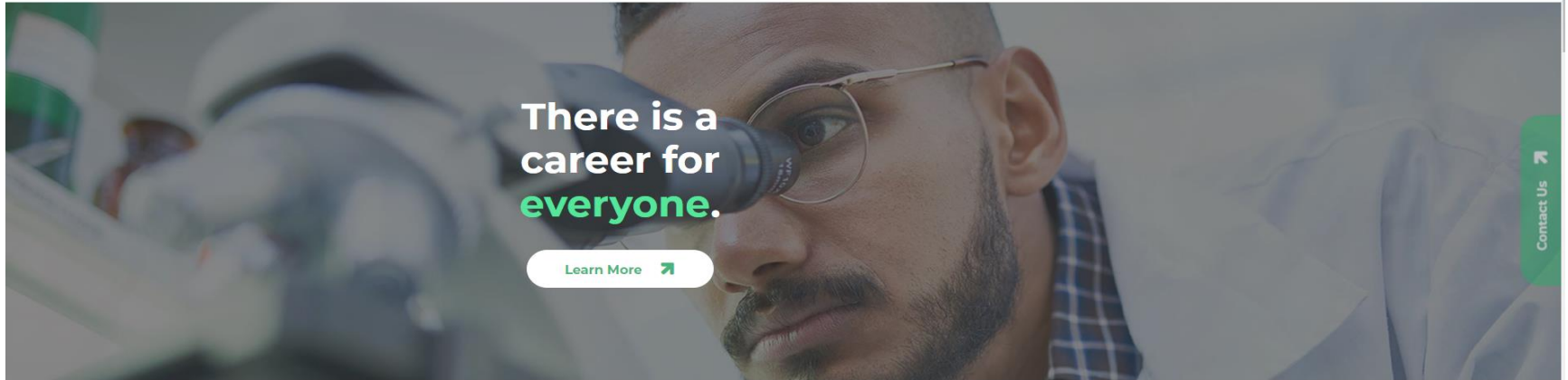
Employer & Workforce
Partners

Newsroom

Leadership

Job Opportunities

Partner Login



There is a
career for
everyone.

Learn More 

Contact Us 

The Blue Ridge Partnership for Health Science Careers is a collaboration of educators, employers, and economic development professionals in the Roanoke and New River Valleys, the Alleghany Highlands, and the greater Lynchburg region. As members of [GO Virginia Region 2](#), we're committed to improving health sciences education and aligning instruction to meet the urgent workforce needs of the region's health employers, including hospitals, health systems, long-term care facilities, and emerging biomedical companies.

Our Partnership uses a new model for health sciences education and workforce development

Stakeholder Organizations

All 17 School Districts in GO Virginia Region 2

Original stakeholder districts

Roanoke City Public Schools
Roanoke County Public Schools
Botetourt County Public Schools
Franklin County Public Schools
Craig County Public Schools
Salem City Schools

Community Colleges

Virginia Western Community College
Central Virginia Community College
New River Community College
Mountain Gateway Community College

Four-year Institutions

Roanoke College
Ferrum College
Virginia Tech
Radford University
Carilion
Hollins University
Roanoke Higher Education Center

Post-Graduate Institutions

VTC School of Medicine
Fralin Biomedical Research Institute at VTC
VCOM

Employers

Carilion Clinic
LewisGale Regional Health System
Centra Health
Friendship Living
Richfield Living
American Health Care
Commonwealth Care
Medical Facilities of America
Home Instead
Freedom First Enterprises* Fiscal agent for the BRPHSC

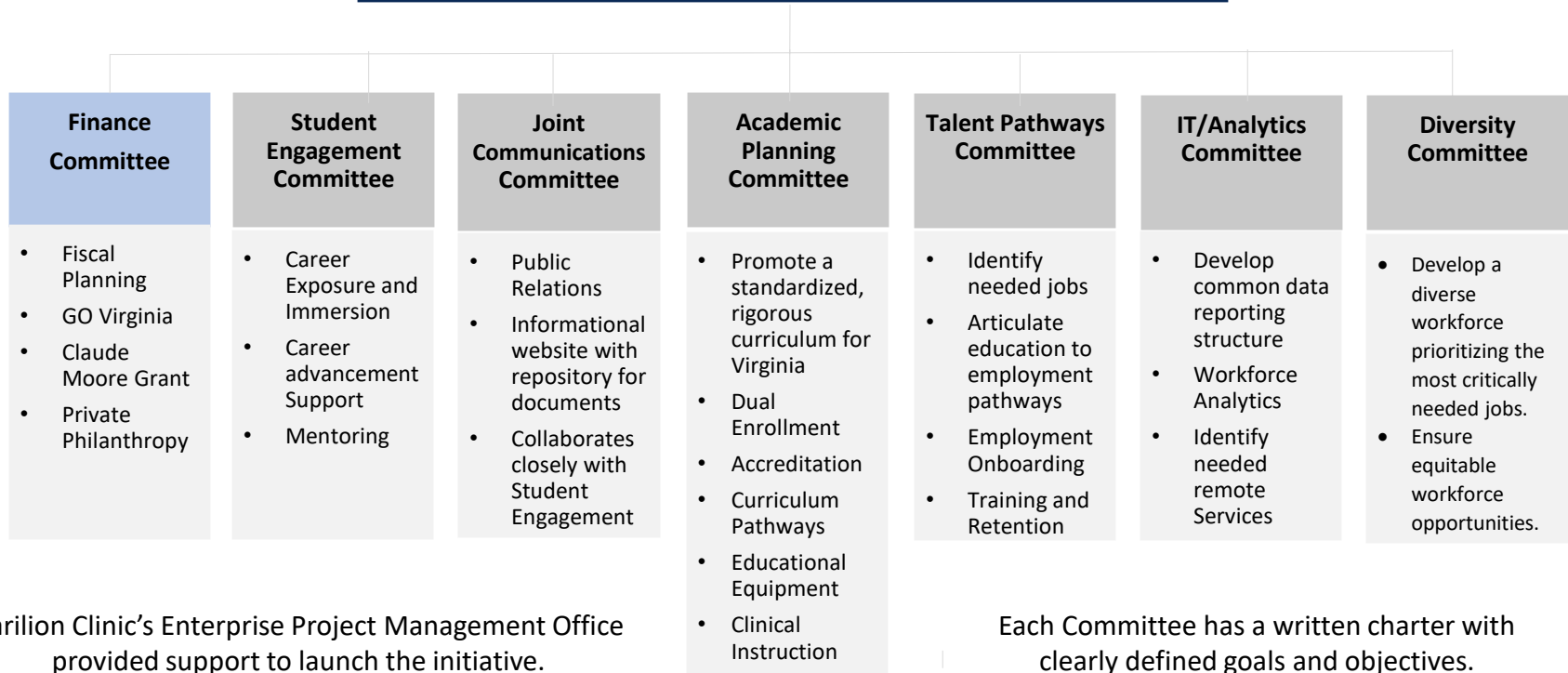
Economic Development

Greater Roanoke Workforce Development Board
New River/Mount Rogers Workforce Development Board
Central Virginia Workforce Development Board
VERGE – *Roanoke Blacksburg Technology Council, Roanoke Accelerator and Mentor Program (RAMP)*



REVISED ORGANIZATIONAL CHART

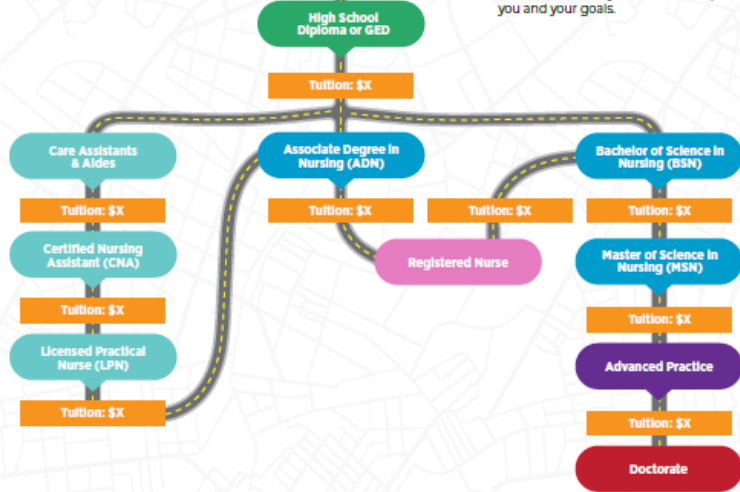
Blue Ridge Partnership for Health Science Careers Board of Directors





Your Roadmap to Careers in Nursing.

Remember, no career path is the same. While these are some of the most common nursing paths we've seen from one job to another, the skills you earn are unique to you and your goals.



Draft Nursing Pathway

Focus Groups planned in May to identify in all career maps through Carilion Clinic and Academic Planning Committee

<p>Care Assistants & Aides Specializations</p> <p>Medical Aides Certified Medical Assistant (CMA)</p> <p>Licensed Practical Nurse (LPN) Places of Practice</p> <p>Long-term Care Hospitals Physician Office or Clinic Ambulatory Practice (Primary Care)</p> <p>Registered Nurse (RN) Places of Practice</p> <p>Labor & Delivery Surgery Emergency Room (ER) Medical Surgical</p> <p>Operating Room (OR) Intensive Care Unit (ICU) Pediatrics (PCU, PEDS, PICU, NICU) Primary Care</p>	<p>Master's Degree Advanced Practice Specializations</p> <p>Family Nurse Practitioner Psychiatric NP Acute Care NP Certified Nurse Midwife Pediatric NP Clinical Specialist CRN Anesthetist (CRNA) Faculty</p> <p>Doctorate Specializations</p> <p>Doctor of Nursing Practice Doctor of Nursing Practice – Education Doctor of Nursing Practice – Leadership Doctor of Philosophy in Nursing</p>
--	--

Sample Dual Enrollment Pathway Into Higher Education Health Sciences Pathways

Prefix	Course Name	Credit Hrs.	Course Category
BIO 101 or SCI ELE	General Biology I or Science Elective	4	Natural Science
ENG 111	Grammar and Composition I	3	Written Communication
HLT 143 or HLT 230 or BIO 230	Medical Terminology I or Principles of Nutrition and Human Development	3	Health or Science
PHI 220 or HUM ELE	Ethics or HUM Elective	3	Humanities
PSY 230 or PSY/SOC ELE	Developmental Psychology or PSY/SOC Elective	3	Social and Behavioral Science
SDV 100 or SDV 101	College Success Skill or Orientation to Health Professions	1 to 2	Student Development
ELE (TR)	Transferable Elective	3 to 5	Elective
	Total Credits	20 to 23	

Regional Efforts in Tidewater, Northern Virginia, and Southern Virginia Partnership

- Regional Organization and Structures in progress
- Paid internships for students 16+ years of age in healthcare organizations
- Collaborations between K-12 Public School Systems, Higher Education, and Workforce
- Streamlining resources and opportunities for the regions



Center For Health Workforce

Serving the Claude Moore Scholar Program

chwf@gmu.edu

Goals & Objectives:



Goal 1
Expand the Health Workforce To Meet
Evolving Community Needs

Goal 2
Improve the Distribution of the Health
Workforce to Reduce Shortages

Goal 3
Enhance Health Care Quality through
Professional Development, Collaboration,
and Evidence-Informed Practice

Goal 4
Develop and Apply Data and Evidence To
Strengthen the Health Workforce

Early Education



Middle School Focus and Recruitment

BLOOM (Building Learning Opportunities and Options in Medical Sciences) Exploratory Program in Loudoun County Public Schools



Program and Student Needs:

1. Strengthen Co-Curricular Student Professional Organizations Like HOSA (Health Occupations Students of America)
2. Early Engagement in Elementary School
3. Rigorous Science Coursework Combined With CTE Health and Medical Sciences Specialty Courses
4. Regional Engagement and Organization by Go Virginia Regions

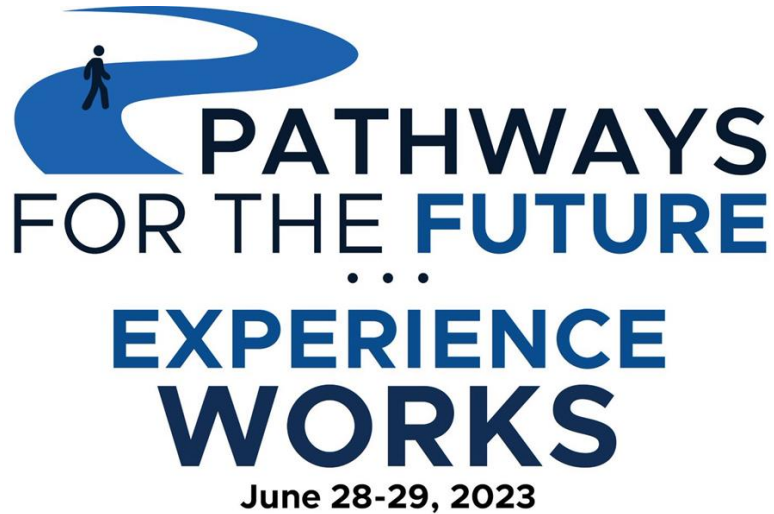


QUESTIONS/COMMENTS



THANK YOU





Earn Your PD Points!

Please complete the
survey at the end of this
Zoom session